

# 52 Series Manifold



## High Purity Modular Gas Distribution system

The 52B, 52C and 52S series manifolds are modular gas distribution systems that may be connected to regulators, dual regulator switchovers, and AutoSwitch systems. A modular gas distribution system allows the user to size the inlet capacity of a system so that cylinder changes will not be as frequent. This system provides the user with the capability of purchasing an unlimited number of manifold stations connected to a single header. The headers themselves may be purchased as a complete system (unassembled) or as individual components



### Specifications

**Maximum Inlet Pressure:** 3000 psig (210 bar)

**Diaphragm Valve:**

Brass or stainless steel barstock (Body)

PCTFE (seat):

303/304 stainless steel (Stems)

Elgiloy® (Diaphragms)

**Header:**

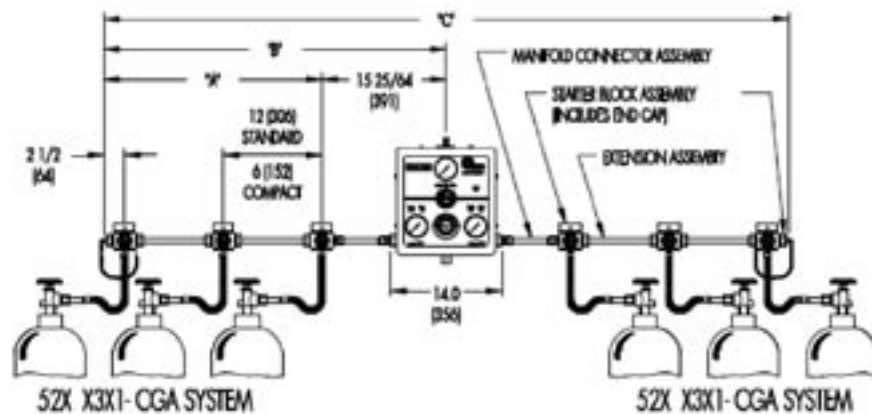
0.625" OD x 0.188" wall (Brass)

0.625" OD x 0.095" wall (Stainless)

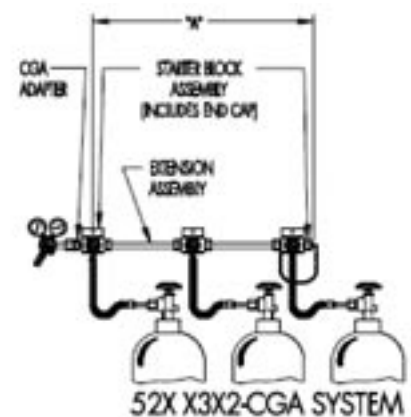
**Operating Temperature Range:** -40 to 60°C

### Features

- Modular design allowing for flexible field installation.
- Integral diaphragm valves: leak-tight design and shut-off capability
- Available in brass, chrome-plated brass or stainless steel.
- Check valves in pigtail inlet gland to prevent contamination
- Silver brazed or TIG welded connection.
- Metal-to-metal field assembled joints.



Switchover System



Regulator System